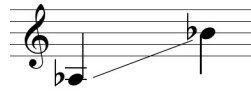


# Song of Soul



Low

Words and Music by Peter B. Allen

♩ = 76-78

www.WatchFireMusic.com -- Published Under License from Publisher  
Notice: Purchasers of this musical file are entitled to use 2 copies for their personal enjoyment and musical fulfillment. Any other duplication, adaptation, arranging and/or transmission of this copyrighted music requires written consent of the copyright owners. Unauthorized uses are infringements of the copyright laws of the United States and other countries and may be subject the user to civil and/or criminal penalties.

Song of Soul

2  
14

*mp*

Mos - es ob - jec - ted: "I'm just a no-bo-dy, No one will lis-ten to me

*mp*

Detailed description: This system contains the first four measures of the piece. The vocal line is in a treble clef with a key signature of three flats (B-flat, E-flat, A-flat) and a 2/4 time signature. The piano accompaniment is in a grand staff with a key signature of three flats. The piano part features a steady eighth-note bass line and chords in the right hand. Dynamics include *mp* and accents.

18

*mp* *mf*

I won't know what to say, I won't know what to do. Can't you find some-one else?

*mp* *mf*

Detailed description: This system contains measures 18 through 21. The vocal line continues with a similar melodic pattern. The piano accompaniment features a more active right hand with chords and moving lines. Dynamics range from *mp* to *mf*, with a crescendo leading to the final measure.

22

*molto rit.* *f* *a tempo*

Then God said: "Who made your voice? Who made your hands? Who gave you eyes to

*f*

Detailed description: This system contains measures 22 through 25. The tempo changes from *a tempo* to *molto rit.* and back to *a tempo*. The piano accompaniment is characterized by dense, block-like chords in the right hand and a steady bass line. Dynamics include *f* and accents.

26

*mf* *f* *rit.* *mf* *a tempo*

see? Who made the shin-ing stars, o-cceans of blue and green, Clear riv-ers run-ning

*mf* *f* *mf*

Detailed description: This system contains measures 26 through 29. The vocal line concludes the phrase. The piano accompaniment features a mix of chords and moving lines. Dynamics include *mf*, *f*, *rit.*, and *mf* with a decrescendo.

Song of Soul

30 *f*

free? Who made the light? Who made the sound? Who made the plan-ets

34 *rit.* *mp* a tempo freely *molto rit.*

roll?" Whis - per His name, al - ways the same: God whose name is

38 a tempo rit.

Soul.

42 *mp*

Are you like Mos-es, lost in the wild-er-ness? Yearn-ing to hear God's voice