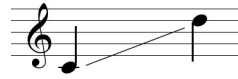


Song of Soul



Medium

Words and Music by Peter B. Allen

♩ = 76-78

p

Deep in the des - ert,

www.WatchFireMusic.com - Published Under License from Publisher
Notice: Purchasers of this musical file are entitled to use 2 copies for their personal enjoyment and musical fulfillment. Any other duplication, adaptation, arranging and/or transmission of this copyrighted music requires written consent of the copyright owners. Unauthorized uses are infringements of the copyright laws of the United States and other countries and may be subject the user to civil and/or criminal penalties.

6 *mp*

far in the wild-er-ness Mos - es was tend-ing his flock Out of a burn-ing bush,

10 *mf*

God said to Mos - es: "Go set my peo - ple free!"

Song of Soul

2
14 *mp*

Musical notation for the vocal line, measures 14-17. The melody consists of eighth and quarter notes in a B-flat major key.

Mos - es ob - jec - ted: "I'm just a no-bo-dy, No one will lis-ten to me

Piano accompaniment for measures 14-17. The right hand plays chords, and the left hand plays a simple bass line. Dynamics include *mp* and *mf*.

18 *mp*

Musical notation for the vocal line, measures 18-21. The melody continues with eighth and quarter notes.

I won't know what to say, I won't know what to do. Can't you find some-one else?

Piano accompaniment for measures 18-21. The right hand features more complex chordal textures, including some triplets. Dynamics include *mp* and *mf*.

22 *molto rit.* *f* *a tempo*

Musical notation for the vocal line, measures 22-25. The tempo changes from *molto rit.* to *a tempo*.

Then God said: "Who made your voice? Who made your hands? Who gave you eyes to

Piano accompaniment for measures 22-25. The right hand plays a series of chords, and the left hand has a steady eighth-note bass line. Dynamics include *f*.

26 *mf* *f* *rit.* *mf* *a tempo*

Musical notation for the vocal line, measures 26-29. The tempo changes from *rit.* to *a tempo*.

see? Who made the shin-ing stars, o-ceans of blue and green, Clear riv-ers run-ning

Piano accompaniment for measures 26-29. The right hand plays chords, and the left hand has a steady eighth-note bass line. Dynamics include *mf* and *f*.

Song of Soul

30 *f*

free? Who made the light? Who made the sound? Who made the plan - ets

Detailed description: This system contains the first four measures of the piece. The vocal line starts with a quarter rest, followed by a half note G4, a quarter note A4, a quarter note B4, and a quarter note C5. The piano accompaniment features a treble clef with chords and a bass clef with a steady eighth-note accompaniment. A dynamic marking of *f* is present.

34 *rit.* *mp* a tempo freely *molto rit.*

roll?" Whis - per His name, al - ways the same: God whose name is

Detailed description: This system contains measures 34-37. The vocal line continues with a quarter note G4, a quarter note A4, a quarter note B4, and a quarter note C5. The piano accompaniment features a treble clef with chords and a bass clef with a steady eighth-note accompaniment. Dynamic markings include *rit.*, *mp*, and *molto rit.*

38 a tempo rit.

Soul.

Detailed description: This system contains measures 38-41. The vocal line has a long note G4 with a slur over it, followed by three measures of rests. The piano accompaniment features a treble clef with chords and a bass clef with a steady eighth-note accompaniment. Dynamic markings include *a tempo* and *rit.*

42 *mp*

Are you like Mos-es, lost in the wild-er-ness? Yearn-ing to hear God's voice

Detailed description: This system contains measures 42-45. The vocal line starts with a quarter note G4, a quarter note A4, a quarter note B4, and a quarter note C5. The piano accompaniment features a treble clef with chords and a bass clef with a steady eighth-note accompaniment. A dynamic marking of *mp* is present.