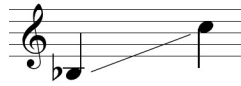


Song of Soul



Medium Low

Words and Music by Peter B. Allen

♩ = 76-78

www.WatchFireMusic.com -- Published Under License from Publisher
Notice: Purchasers of this musical file are entitled to use 2 copies for their personal enjoyment and musical fulfillment. Any other duplication, adaptation, arranging and/or transmission of this copyrighted music requires written consent of the copyright owners. Unauthorized uses are infringements of the copyright laws of the United States and other countries and may be subject the user to civil and/or criminal penalties.

Song of Soul

2
14

mp

Mos - es ob-jec - ted: "I'm just a no-bo-dy, No one will lis-ten to me

Mos - es ob-jec - ted: "I'm just a no-bo-dy, No one will lis-ten to me

14

mp

mp

18

mp

mf

I won't know what to say, I won't know what to do. Can't you find some-one else?

I won't know what to say, I won't know what to do. Can't you find some-one else?

18

mp

mf

mp

molto rit.

f a tempo

22

Then God said: "Who made your voice? Who made your hands? Who gave you eyes to

Then God said: "Who made your voice? Who made your hands? Who gave you eyes to

22

mf

f

rit.

mf a tempo

see? Who made the shin-ing stars, o-ceans of blue and green, Clear riv-ers run-ning

see? Who made the shin-ing stars, o-ceans of blue and green, Clear riv-ers run-ning

26

mf

f

mf

mf

Song of Soul

30 *f*

free? Who made the light? Who made the sound? Who made the plan - ets

Detailed description: This system contains the first four measures of the piece. The vocal line (treble clef) begins with a whole note rest, followed by a quarter note G4, a quarter note A4, a half note B4, and a quarter note C5. The piano accompaniment (grand staff) features a bass line with quarter notes G2, A2, B2, and C3, and a treble line with chords. Dynamics include a forte (*f*) marking and hairpins for crescendo and decrescendo.

34 *rit.* *mp* a tempo freely *molto rit.*

roll?" Whis - per His name, al - ways the same: God whose name is

Detailed description: This system contains measures 34-37. The vocal line continues with a quarter note G4, a quarter note A4, a half note B4, and a quarter note C5. The piano accompaniment features a bass line with quarter notes G2, A2, B2, and C3, and a treble line with chords. Dynamics include a mezzo-piano (*mp*) marking and various tempo markings: *rit.*, *a tempo freely*, and *molto rit.*

38 a tempo rit.

Soul.

Detailed description: This system contains measures 38-41. The vocal line has a whole note G4, followed by three measures of whole rests. The piano accompaniment features a bass line with quarter notes G2, A2, B2, and C3, and a treble line with chords. Dynamics include a mezzo-forte (*mf*) marking and a *rit.* marking.

42 *mp*

Are you like Mos-es, lost in the wild-er-ness? Yearn-ing to hear God's voice

Detailed description: This system contains measures 42-45. The vocal line begins with a quarter note G4, a quarter note A4, a half note B4, and a quarter note C5. The piano accompaniment features a bass line with quarter notes G2, A2, B2, and C3, and a treble line with chords. Dynamics include a mezzo-piano (*mp*) marking.