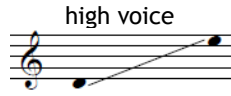


Living Truth

♩ = 104
Steadily



Words and Music by
Tessa E.B. Frost
Jay A.H. Frost

Voice

Piano

mp *simile*

6

11 *mp*

I know what they say, it's what we're told ev-ery day,

©2012 Frost Music Productions. www.jayandtessa.us
P. O. Box 85843, Seattle, WA 98145. All Rights Reserved. #120812

Notice: Purchasers of this sheet music are entitled to use two (2) copies for performance, personal enjoyment, or musical fulfillment. Any other duplication, adaptation, arranging and/or transmission of this copyrighted music requires written consent of Frost Music Productions. Unauthorized uses are infringements of the copyright laws of the United States and other countries and may subject the user to civil and/or criminal penalties.

www.WatchFireMusic.com - Published Under License from Publisher
Notice: Purchasers of this musical file are entitled to use 2 copies for their personal enjoyment and musical fulfillment. Any other duplication, adaptation, arranging and/or transmission of this copyrighted music requires written consent of the copyright owners. Unauthorized uses are infringements of the copyright laws of the United States and other countries and may subject the user to civil and/or criminal penalties.

Living Truth

15

that man is a mess, a slave to the grave.

15

Detailed description: This system contains the first two musical staves. The top staff is a vocal line in treble clef with a key signature of one sharp (F#) and a common time signature. It begins with a measure rest, followed by the lyrics "that man is a mess, a slave to the grave." The bottom staff is a piano accompaniment in bass clef, featuring a steady eighth-note bass line and chords in the right hand.

19

It's time that you knew we've all been fooled,

19

Detailed description: This system contains the second two musical staves. The top staff is a vocal line in treble clef with a key signature of one sharp (F#) and a common time signature. It begins with a measure rest, followed by the lyrics "It's time that you knew we've all been fooled,". The bottom staff is a piano accompaniment in bass clef, featuring a steady eighth-note bass line and chords in the right hand.

23

that sto - ry could-n't be fur-ther from the Truth.

23

Detailed description: This system contains the third two musical staves. The top staff is a vocal line in treble clef with a key signature of one sharp (F#) and a common time signature. It begins with a measure rest, followed by the lyrics "that sto - ry could-n't be fur-ther from the Truth.". The bottom staff is a piano accompaniment in bass clef, featuring a steady eighth-note bass line and chords in the right hand.

©2012 Frost Music Productions. www.jayandtessa.us
P. O. Box 85843, Seattle, WA 98145. All Rights Reserved. #120812

Notice: Purchasers of this sheet music are entitled to use two (2) copies for performance, personal enjoyment, or musical fulfillment. Any other duplication, adaptation, arranging and/or transmission of this copyrighted music requires written consent of Frost Music Productions. Unauthorized uses are infringements of the copyright laws of the United States and other countries and may subject the user to civil and/or criminal penalties.